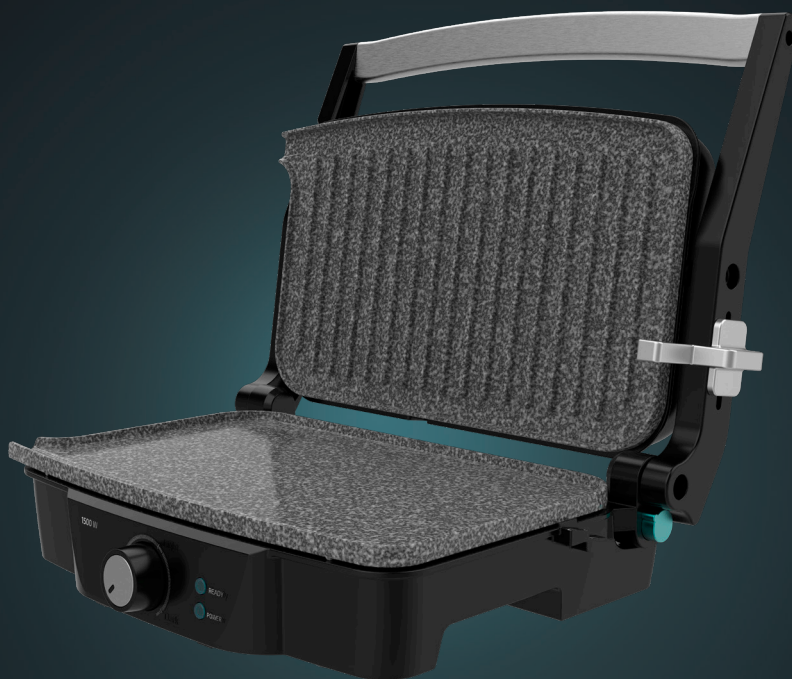


# cecotec

## ROCK'NGRILL 1500 STONE CERAMIC MIX

Parrilla eléctrica / Electric grill



Manual de instrucciones  
Instruction manual  
Manuel d'instructions  
Bedienungsanleitung  
Manuale di istruzioni  
Manual de instruções  
Handleiding  
Instrukcja obsługi  
Návod k použití



Instrucciones de seguridad	4
Safety instructions	7
Instructions de sécurité	10
Sicherheitshinweise	13
Istruzioni di sicurezza	16
Instruções de segurança	19
Veiligheidsvoorschriften	22
Instrukcje bezpieczeństwa	25
Bezpečnostní pokyny	28

## ÍNDICE

1. Piezas y componentes	31
2. Antes de usar	31
3. Funcionamiento	31
4. Limpieza y mantenimiento	33
5. Especificaciones técnicas	34
6. Reciclaje de electrodomésticos	34
7. Garantía y SAT	34
8. Copyright	34

## INDEX

1. Parts and components	35
2. Before use	35
3. Operation	35
4. Cleaning and maintenance	37
5. Technical specifications	37
6. Disposal of old electrical appliances	38
7. Technical support and warranty	38
8. Copyright	38

## SOMMAIRE

1. Pièces et composants	39
2. Avant utilisation	39
3. Fonctionnement	39
4. Nettoyage et entretien	41
5. Spécifications techniques	42
6. Recyclage des électroménagers	42
7. Garantie et SAV	42
8. Copyright	42

## INHALT

1. Teile und Komponenten	43
2. Vor dem Gebrauch	43
3. Bedienung	43
4. Reinigung und Wartung	45
5. Technische Spezifikationen	46
6. Entsorgung von alten Elektrogeräten	46
7. Garantie und Kundendienst	46
8. Copyright	46

## INDICE

1. Parti e componenti	47
2. Prima dell'uso	47
3. Funzionamento	47
4. Pulizia e manutenzione	49
5. Specifiche tecniche	49
6. Riciclaggio di elettrodomestici	50
7. Garanzia e supporto tecnico	50
8. Copyright	50

## ÍNDICE

1. Peças e componentes	51
2. Antes de usar	51
3. Funcionamento	51
4. Limpeza e manutenção	53
5. Especificações técnicas	53
6. Reciclagem de eletrodomésticos	54
7. Garantia e SAT	54
8. Copyright	54

## INHOUD

1. Onderdelen en componenten	55
2. Voor u het toestel gebruikt	55
3. Werking	55
4. Schoonmaak en onderhoud	57
5. Technische specificaties	57
6. Recyclage van huishoudtoestellen	58
7. Garantie en technische ondersteuning	58
8. Copyright	58

## SPIS TREŚCI

1. Części i komponenty	59
2. Przed użyciem	59
3. Funkcjonowanie	59
4. Czyszczenie i konserwacja	61
5. Dane techniczne	61
6. Recykling sprzętu AGD	62
7. Gwarancja i serwis techniczny	62
8. Copyright	62

## OBSAH

1. Části a složení	63
2. Před použitím	63
3. Fungování	63
4. Čištění a údržba	65
5. Technické specifikace	65
6. Recyklace elektrospotřebičů	66
7. Záruka a technický servis	66
8. Copyright	66

## SAFETY INSTRUCTIONS

All safety instructions should be closely followed when using the appliance.

- Make sure that the mains voltage matches the voltage stated on the rating label of the appliance and that the wall outlet is grounded.
- To reduce the risk of electric shock, this appliance has been equipped with a grounded plug. If the plug does not fit fully into the wall outlet, contact a qualified electrician. Do not modify the plug in any way, nor use a power adapter.
- Do not immerse the cord, plug, or any non-removable part of the appliance in water or any other liquid. Do not expose the electrical connections to water. Make sure your hands are dry before handling the plug or switching on the appliance.
- Warning: Never immerse the appliance in water. Do not reach into the water!
- Check the power cord regularly for visible damage. If the cord is damaged, it must be replaced by the official Technical Support Service of Cecotec in order to avoid any type of danger.
- Warning: do not use the appliance if its cord, plug or housing are damaged, nor after it malfunctions or has been dropped or damaged in any way.
- Do not twist, bend, pull or damage the power cord. Protect it from sharp edges and heat sources. Do not allow it to touch hot surfaces. Do not let the cord hang over the edge of the working surface or worktop.
- The appliance is not intended to be operated by means of an external timer or separate remote-control system.
- Turn off and unplug the appliance from the mains supply when not in use and before cleaning it. Pull from the plug, not the cord, to disconnect it from the outlet.

- This product is designed only for household use. It is not suitable for commercial or industrial use. Do not use outdoors.
- Do not use any accessory that has not been recommended by Cecotec, as they might cause injuries or damage.
- The appliance is not intended to be used by children under the age of 8. It can be used by children over the age of 8, as long as they are given continuous supervision.
- This appliance can be used by children aged 8 and above, and persons with reduced physical, sensory or mental capabilities or lack of experience and knowledge, as long as they have been given supervision or instruction concerning the use of the appliance in a safe way and understand the hazards involved.
- Children shall not play with the appliance. Close supervision is necessary when the appliance is being used by or near children.
- Keep this appliance and its power cord out of reach of children under the age of 8.
- Place the appliance on a dry, stable, flat, heat-resistant surface.
- Do not use the appliance under the following circumstances:
  - On or near a gas or electric hob, in heated ovens, or near open flames.
  - On soft surfaces (such as carpets) or where it may tip over during use.
  - Outdoors or in areas with high humidity levels.
  - Near or below flammable materials (such as curtains, cloths, wall hangings, tea towels, etc.) or under wall cabinets.
- To ensure the correct operation of the device, cleaning and maintenance tasks must be carried out according to this instruction manual. Turn off and unplug the appliance

before moving and cleaning it. Allow it to completely cool down before cleaning or storing it.

- Cleaning and maintenance tasks should not be carried out by children.
- Store the appliance and its instruction manual in a safe and dry place when not in use.
- The temperature of accessible surfaces may be high while in use and could cause burns. Do not touch hot surfaces while in use or immediately after. Use its handles.

## 1. PARTS AND COMPONENTS

Fig. 1

1. Handle
2. Lock and support
3. Power light indicator
4. Ready light indicator
5. Temperature knob
6. 180° release button
7. Grease outlet
8. 2 drip trays
9. Mixed heating plates

## 2. BEFORE USE

- This product includes a safety package to protect it during transport. Unpack the appliance and keep the original packaging and materials in a safe place. It will help prevent any damage if the product needs to be transported in the future. In case the original packaging is disposed of, make sure all packaging materials are recycled accordingly.
- Clean the cooking plates with a wet sponge or cloth.
- Dry the plates with a cloth or paper towel.
- For optimal results, cover both plates with some oil.

### Note

You may notice a slight burning smell or smoke when using the product for the first time, caused by the excess of lubricants from the manufacturing process. This does not affect the safety of your appliance.

## 3. OPERATION

1. Close the press grill and plug it to the mains supply. You will notice that the red power light turns on, indicating that the grill is on.
2. Turn the temperature dial clockwise to adjust the temperature to your desired liking. Try a medium setting at first and adjust the temperature to your liking in later uses.
3. The READY indicator light will turn on, indicating that the grill is preheating. It will take around 3-5 minutes to reach the cooking temperature. The light will turn off once the desired temperature has been reached.
4. The grill is ready for use.

### Contact grill

1. Set the temperature control dial to the desired position.
2. Prepare the burgers, boneless pieces of meat, and thin cuts of meat or other food, and place them on the bottom cooking plate.
3. Close the top cooking plate, leaving the lock halfway, so that the plates do not touch each other.
4. When the food is ready, use the handle to open the grill. Remove the food with the help of a plastic spatula. Do not use metal tongs or a knife on the grill, as these can damage the non-stick coating of the cooking plates.
5. Use the grill as a contact grill to cook burgers, boneless pieces of meat, and thin cuts of meat and vegetables.
6. Use the grill as a contact grill when you want to cook something in a short amount of time or when you are looking for a healthy cooking method.

Fig. 2

### Press grill

1. Set the temperature control dial to the desired position.
2. Prepare the sandwiches and place them on the bottom cooking plate.
3. Close the top cooking plate to evenly press down on the sandwich. The top plate must be fully lowered to cook sandwiches.
4. Cook them for about 3 to 6 minutes or until golden brown. Adjust the time to your liking.
5. When the sandwich is ready use the handle to open the upper plate. Remove the sandwich with the help of a plastic spatula. Do not use metal tongs or a knife on the grill, as these can damage the non-stick coating of the cooking plates.
6. Use the grill as a press grill to cook sandwiches, bread, and quesadillas.
7. The grill was designed with a unique handle and hinge that allows the cover to adjust to the thickness of the food. You can easily grill anything from a thinly sliced potato to a thick sirloin steak with optimal results.
8. When cooking more than one food at once, it is important that the thickness of the food is consistent, so that the upper plate can press evenly on the food.

Fig. 3

### Open grill

Place the grill on a clean, flat surface.

1. With your left hand on the handle, use your right hand to press the release button to the right of the hinge. Lift the upper plate until it rests flat on the worktop.
2. Use the grill as an open grill to cook burgers, steak, poultry (we do not recommend cooking bone-in chicken, since it does not cook evenly on an open grill), fish, and vegetables.
3. Cooking on the open grill is the most versatile method of using the product. In the open position, the cooking surface doubles.
4. You can cook different types of food separately without mixing their flavours or large amounts of the same type of food.

Fig. 4

## 4. CLEANING AND MAINTENANCE

- Unplug the appliance and let it cool down before cleaning. The unit is easier to clean when slightly warm. Do not immerse the product in water, nor wash it in the dishwasher.
- Wipe the cooking plates with a soft cloth to remove food residue. If any food has stuck to the cooking plates, pour a bit of warm water mixed with detergent over the food residue and clean the plates with a non-abrasive scouring pad.
- The plates can be detached and washed in the dishwasher.
- Do not use abrasive materials that could scratch or damage the non-stick coating.
- Wipe the outside of the appliance with a damp cloth only. Do not clean the outside with any abrasive scouring pad, as this will damage the finish. Do not immerse it in water or any other liquid.
- Do not wash the appliance in the dishwasher.
- Clean the drip trays after each use. Clean the trays with hot soapy water. Avoid the use of scouring pads or harsh detergents as they may damage the surface. Rinse the trays, dry them completely with a soft, dry cloth and put them back in place.
- Store the appliance in a dry and cool place.
- You can use the lock to keep the plates together, in order to store the product in upright position.

## 5. TECHNICAL SPECIFICATIONS

Product: Rock'nGrill 1500 Stone Ceramic Mix&Grill

Product reference: 03194

Power: 1500 W

Voltage and frequency: 220-240 V ~ 50/60 Hz

Manufactured in China | Designed in Spain

## 6. DISPOSAL OF OLD ELECTRICAL APPLIANCES



This symbol indicates that, according to the applicable regulations, the product and/or battery must be disposed of separately from household waste. When this product reaches the end of its shelf life, you should dispose of the batteries/accumulators and take them to a collection point designated by the local authorities.

Consumers must contact their local authorities or retailer for information

## ENGLISH

concerning the correct disposal of old appliances and/or their batteries.  
Compliance with the above guidelines will help to protect the environment.

## 7. TECHNICAL SUPPORT AND WARRANTY

Cecotec shall be liable to the end user or consumer for any lack of conformity that exists at the time of delivery of the product under the terms, conditions and deadlines established by the applicable regulations.

It is recommended that repairs be carried out by qualified personnel.

If at any moment you detect any problem with your product or have any doubt, do not hesitate to contact Cecotec official Technical Support Service at +34 96 321 07 28.

## 8. COPYRIGHT

The intellectual property rights over the texts in this manual belong to CECOTEC INNOVACIONES, S.L. All rights reserved. The contents of this publication may not, in whole or in part, be reproduced, stored in a retrieval system, transmitted or distributed by any means (electronic, mechanical, photocopying, recording or similar) without the prior authorization of CECOTEC INNOVACIONES, S.L.